

CERTIFICATE OF LOCATION OF GOVERNMENT CORNER

WEST QUARTER Corner of Section 06, Township 107N, Range 43W

5th Principal Meridian, State of Minnesota, County of Murray

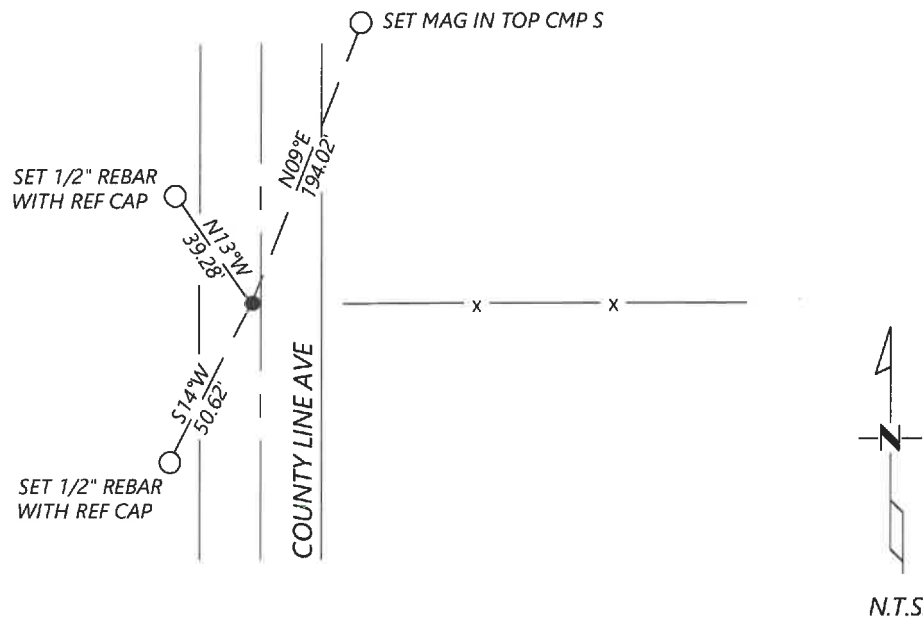
At the corner location shown on the sketch:

☒ On 11/29/2022 found a nothing
DATE

☐ left monument as found ☐ lowered monument ☐ removed monument (explain)

☒ On _____ placed a 1/2" rebar with cap 56488 online between controlling corners and in line with fence
DATE
running east along with 3 new ties.

SKETCH OF REFERENCE TIES



Statement of evidence for this corner location is on back of this page.

I hereby certify that this document was researched and prepared by me or under my direct supervision and that I am a licensed Land Surveyor under the laws of the State of Minnesota.

Signature Karen Broom

Date 12/29/2022 License No. 56488

Title:

☒ Land Surveyor ☐ Professional Engineer
☐ County Surveyor ☐ County Engineer

OFFICE OF THE COUNTY RECORDER

County of Murray

I hereby certify that this document was filed in the Co.

Recorder's office at _____ M. on the _____ day of _____ A.D. 20

County Recorder Karen Broom
by _____, Deputy

DOCUMENT NO. _____

JAN 05 2023

KYLE JOHNSON
Minnesota License No. 56488

Statement of Evidence:

West Quarter Corner of Section 06, Township 107 North, Range 43 West, 5th Principal Meridian, Murray County, Minnesota.

1861- GLO set a post, deposited charcoal, made mound of earth with trench and pits.

2022- Westwood Professional Services set a 1/2" rebar with cap LS56488 online between controlling corners and in line with fence running east. GLO shows a distance of 80.00 chains. Position agrees with lost position. Accepting corner location as the best available of the corner location and set 3 ties.

Analysis of the recovered data, field evidence and survey measurements, indicates that the monument found is the correct perpetuation of this corner. For additional information concerning this corner please contact Westwood Professional Services.